

3D laser scan

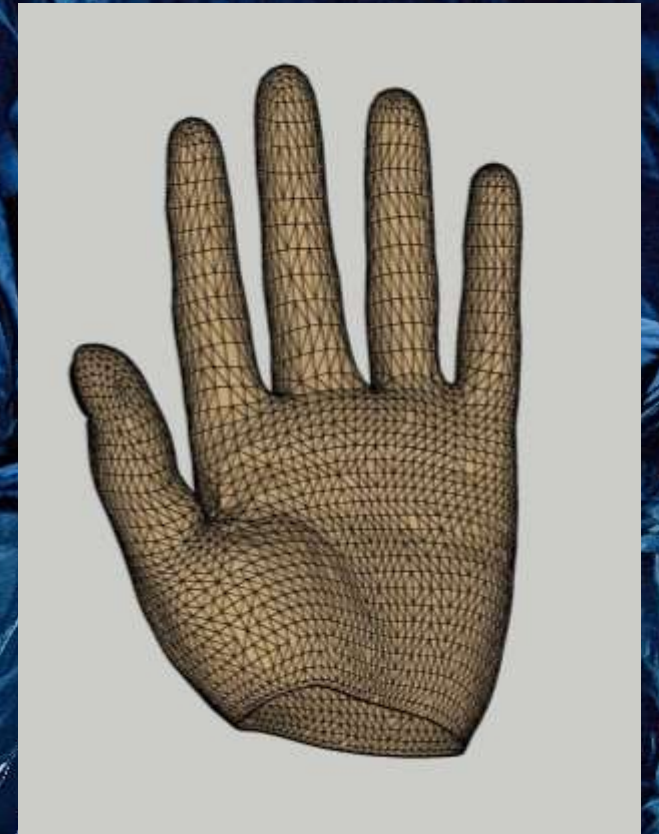
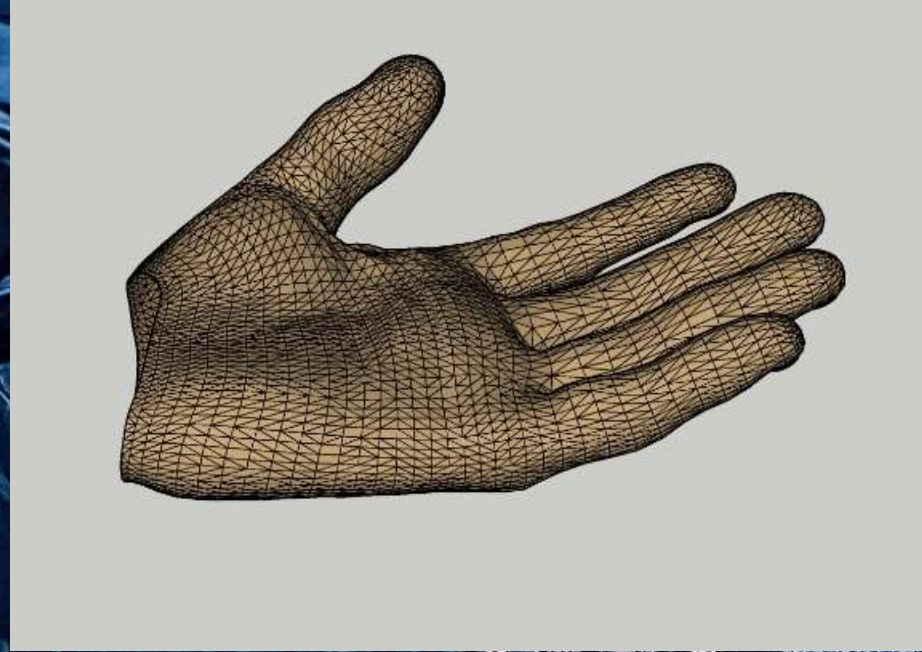


Aladdin the
handsofa

Aladdin

The concept from the designer

Originale file
from a standard
sketch model
provided from
the designer



Aladdin

The model

A process of finding a handmodel was done in our own office. The position and arrangement of fingers was decided. (the designer picked the one on the right)



Aladdin

The model for scan

A silicon mould
was made and a
plastermodel
was made for 3D
scanning



Aladdin

The process of scanning

Laser scanning
with stationery
and rotary plate
Can also be
handheld with
reference points

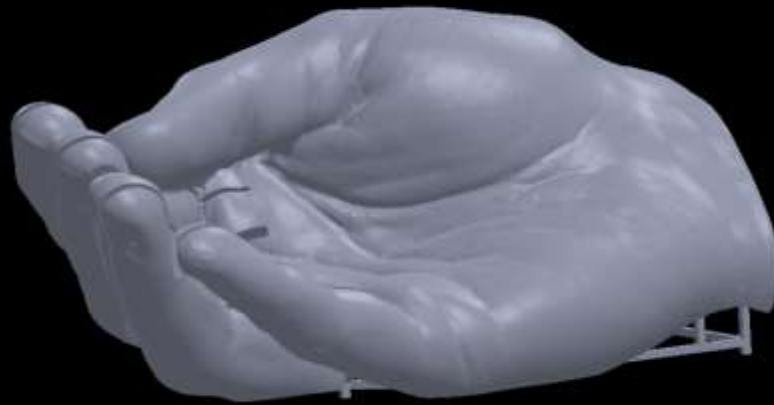


Aladdin

The file formats

Working with 3D files

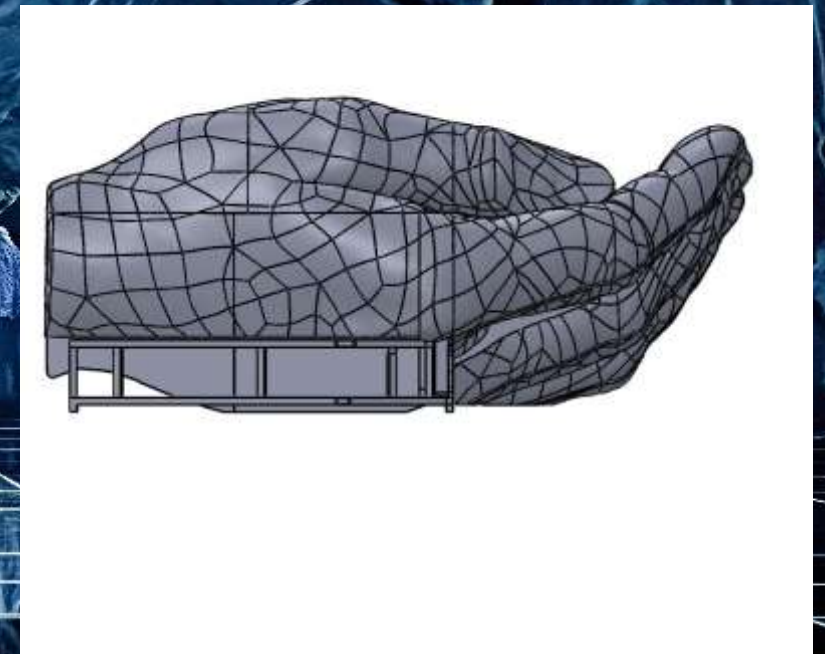
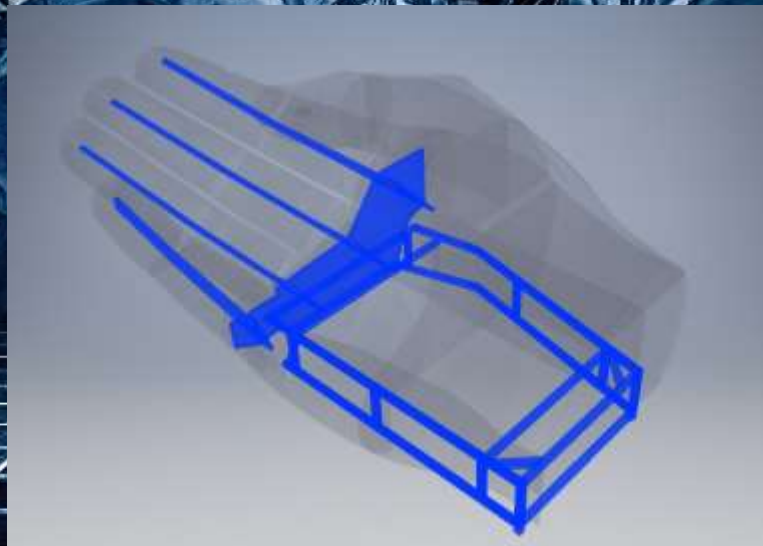
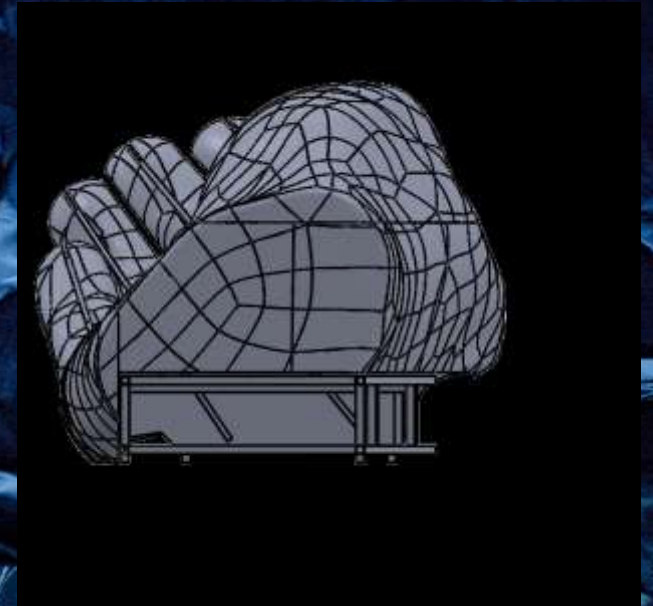
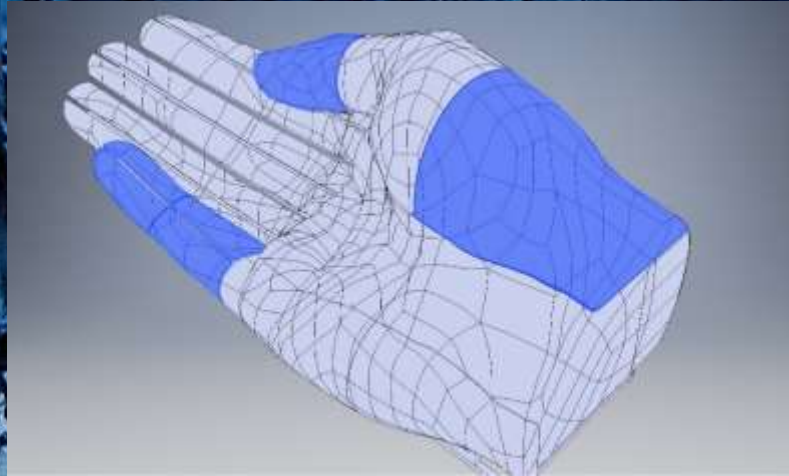
The files comes in many different formats and can be scaled and saved in various resolutions



Aladdin

The Construction drawing

Surfaces and solids are scaled to app. 4 x 2 m. and used in Inventor to make blocks and slices for the hotwircutter, frame and reinforcement for styrofoam inside



Aladdin

The workshop

CNC Hot wire
cutting
And frame for
support and
wheels



Aladdin

The workshop

the Styrofoam is covered with 3 cm foam glued to the styrofoam, and black stretch fabric is hand sewed onto the construction



Aladdin

The final result at

Final sofa
mounted with
lifting wheels
and ready to go
on stage



Aladdin

The rehearsal

Stage rehearsal



Aladdin





3D photogrammetry

Hobbitten
the Hill

Hobbitten

The concept from the designer

Original file from
a standard
sketch up model
provided from
the designer and
a clay model in
1:25
The Hill is 25x16
in full scale



Hobbitten

The model

The designer provided a model of the set in 1:25 and a small piece for scanning test and sample production to find the right solution for construction



Hobbitten

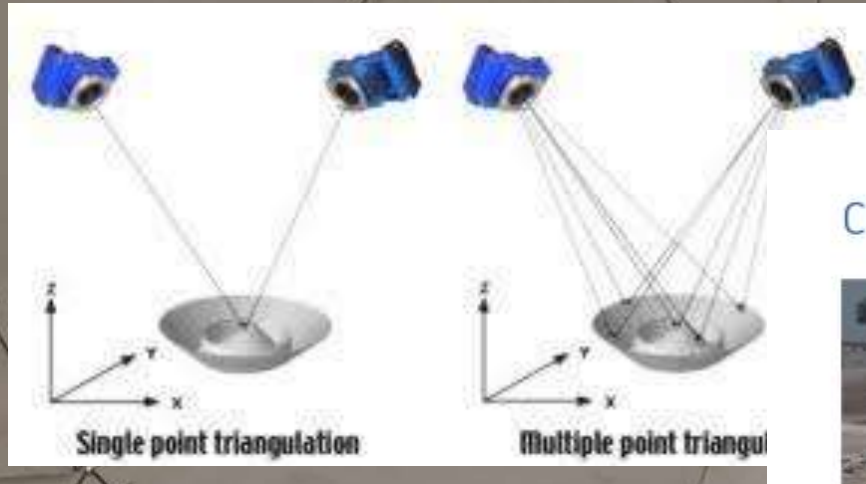
The model for scan

A small styrofoam piece is cut, and then scanned with laser and the clay model is scanned with photogrammetry



Hobbitten

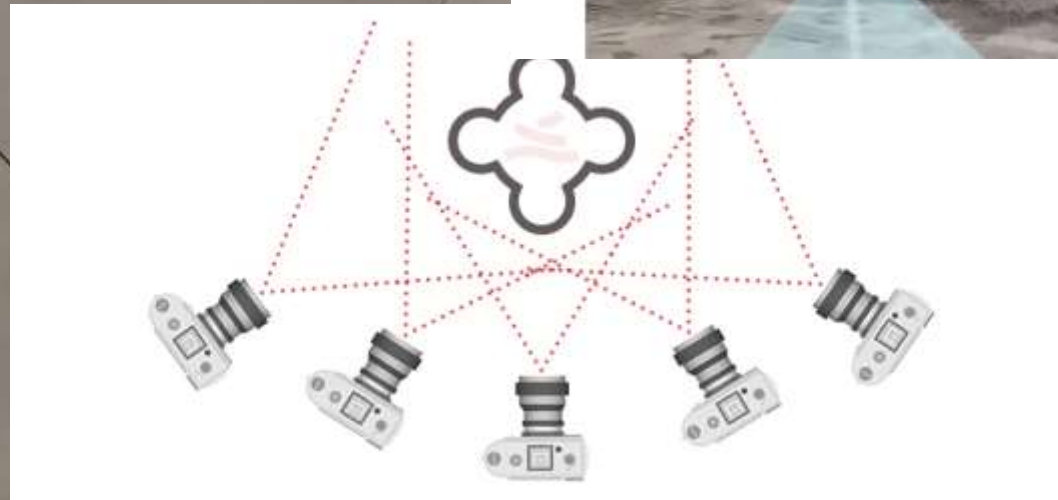
The scanning process



Cloud-based photo-to-3D service



Photogrammetry is a series of photos stitched together by a AI in the cloud. Take the pictures, upload and receive 3D model

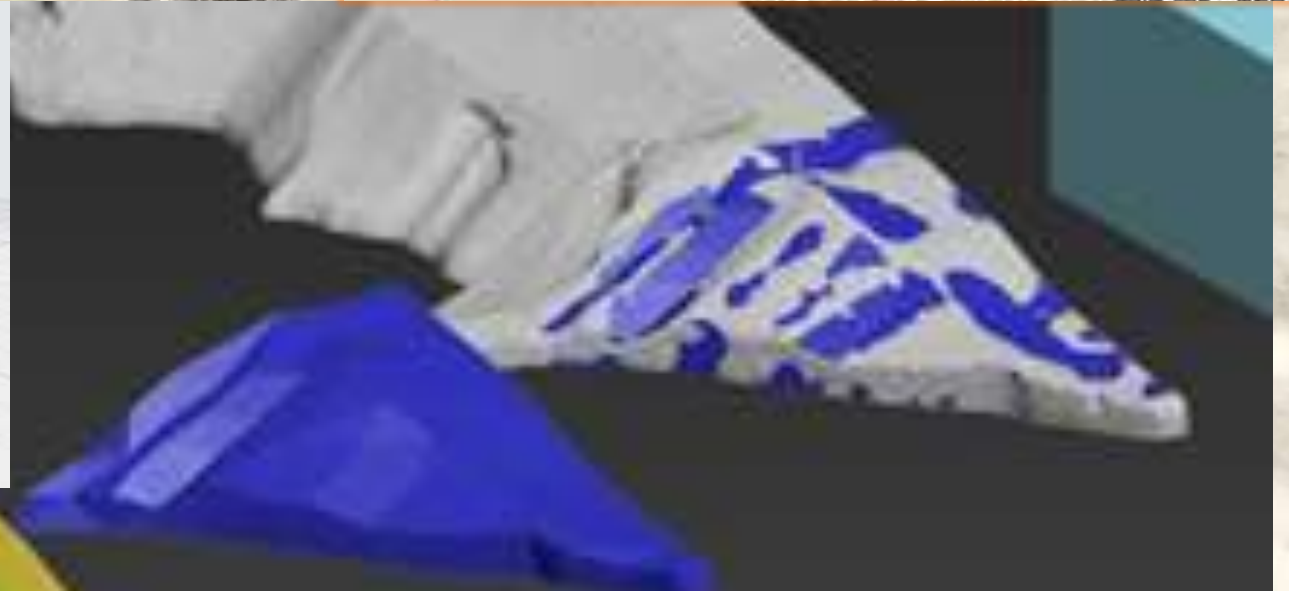
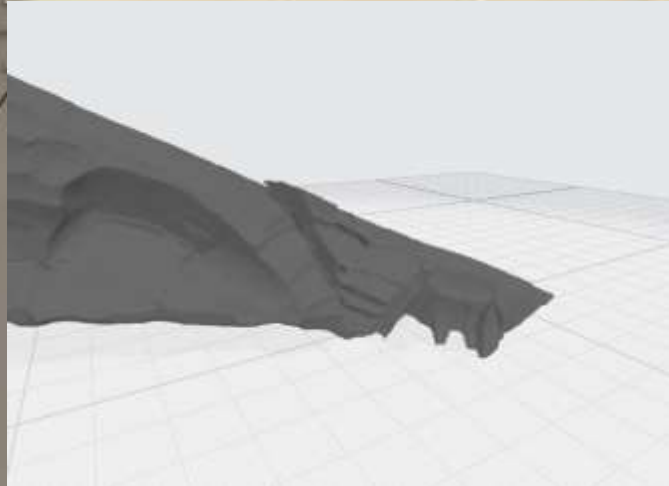
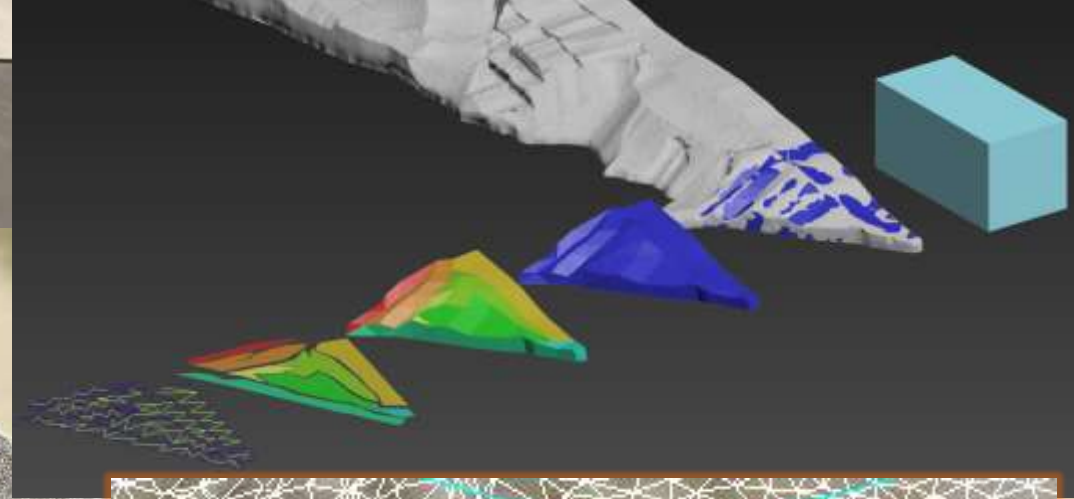


Hobbitten

The file formats

Scanning with photo grammerty produces the same point cloud as a laser scan.

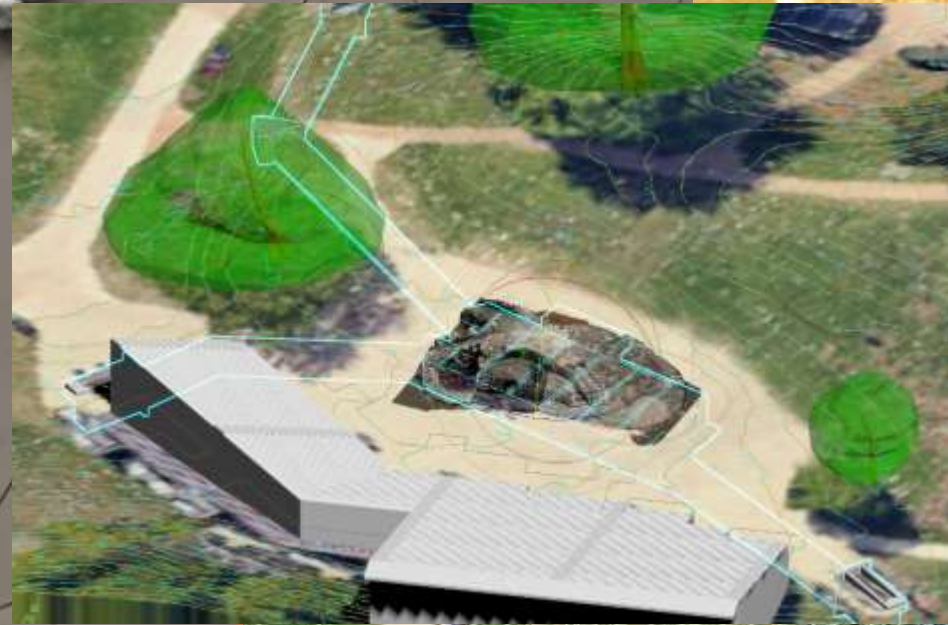
Either way you need to make solids or surfaces from the file



Hobbitten

The file formats

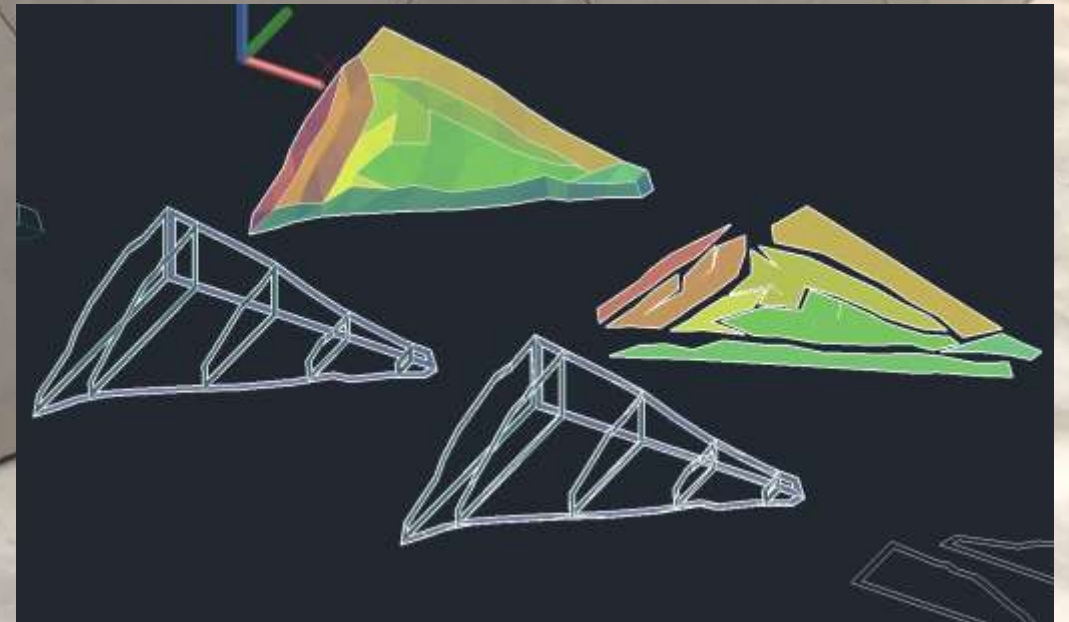
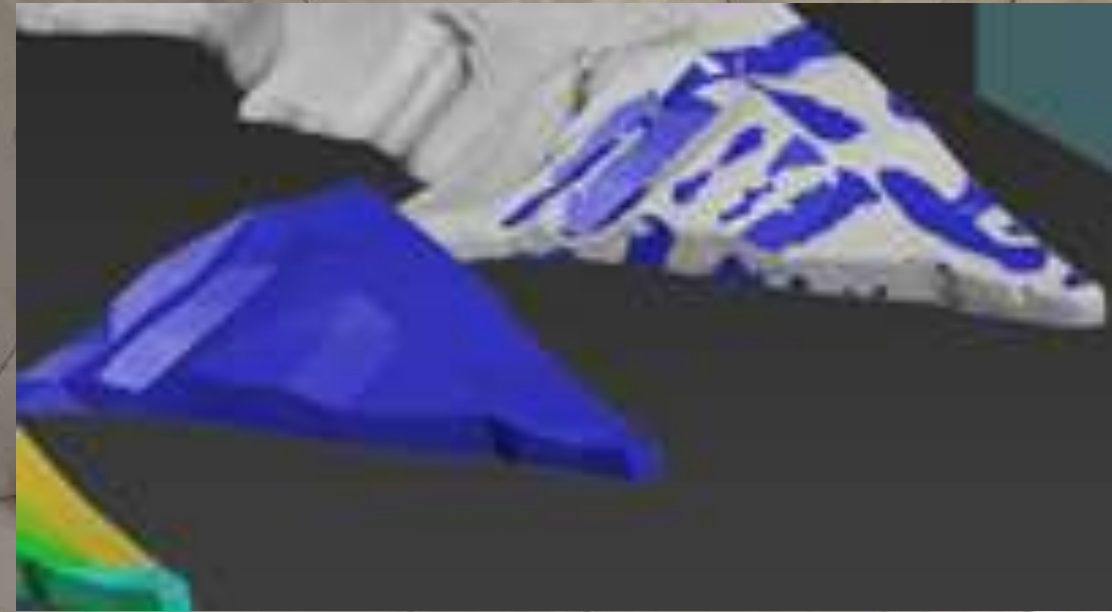
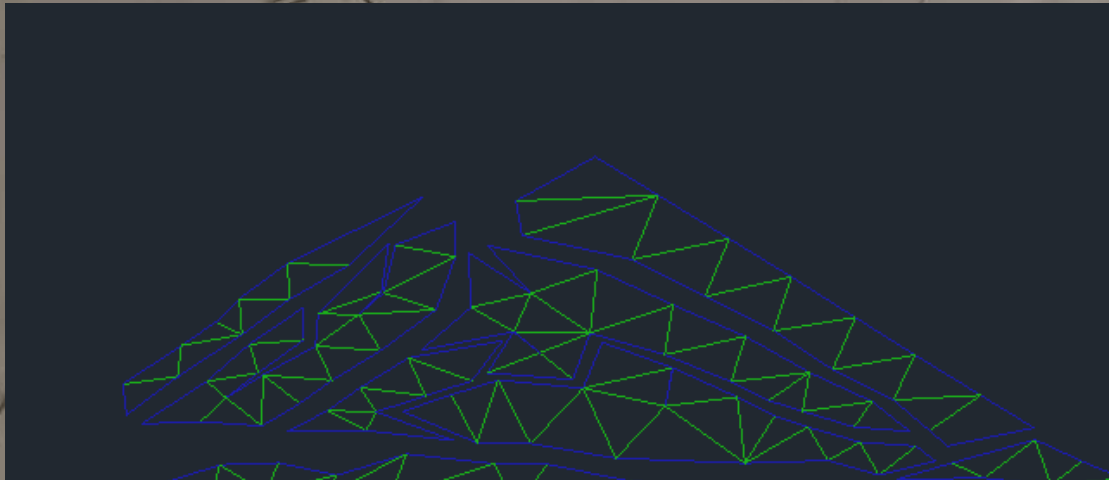
For our outdoor performance site we fit 3 different files together:
The scan of the hill, a quote from GPS for the terrain, a 3D model of our seating construction and a google map combined in one file.



Hobbitten

The Construction drawing

Drawings of frame and skin is produced for laser cutting in 2mm steel according to the skin from the scan



Hobbitten

The workshop mock-up

Steel sheet construction can be formed by hand and welded to the frame



Hobbitten

